

# Maida Vale Primary School Business Plan 2021-24



# Maida Vale Primary School is a collaborative, supportive and empowering learning community.



## Purpose

---

The 2021 – 2024 Business Plan developed for Maida Vale Primary School is applicable to our community and reflects the aspirations by the Department of Education for every student in every public school:

- Unlock and fulfil their learning potential.
- Develop the personal and social attributes that form the basis for future wellbeing.
- Achieve year on year growth in their learning throughout their schooling.
- Be equipped with contemporary and emerging work capabilities.
- Be prepared to take the step beyond school into further education, training or work.

This Business Plan presents the processes and sets targets that the school and wider community will achieve. It outlines the ongoing practices, behaviours and actions that will be implemented.

The ultimate aim for Maida Vale Primary School is to prepare our students to be successful in their future life endeavours beyond primary school.

At Maida Vale we believe that unlocking the potential within every student to be **good at life** is underpinned by feeling safe in their learning environment, being valued and developing a sense of purpose within the community.

The core beliefs that we promote to achieve this at Maida Vale are:

- Every child matters, every day and;
- Every child can be successful.



# Key Values



## IMPACT

The curriculum delivered is purposeful and engaging to focus on key skills necessary to lay the solid foundation for future learning.



## EQUITY

The staff aim to provide each student with the attention they require to learn and progress regardless of circumstance and background.



## EXCELLENCE

Our school staff strive for excellence through development of their professional competence and practices with the aim to meet the need of each child and improve achievement, attendance and engagement.



## WELL-BEING

We promote a school culture that encourages strong relationships and mutual respect amongst all in the school community.



# Excellence in Teaching and Learning

**Our staff promote higher order thinking and problem-solving strategies in an environment where students feel supported, safe and encouraged to express themselves. This is achieved through research based, whole school teaching practices that are contemporary, innovative and inspirational.**

**Maida Vale Primary School ensures that all staff and students have access to relevant and contemporary physical and digital resources and staff have appropriate professional training to ensure a genuine learning experience for students.**

**Through the life of this Business Plan the school will focus upon;**

- the use of High Impact Teaching Strategies and focus on General Capabilities and Soft Skills.
- the consistent approach of the school's Explicit Instruction of curriculum.
- using quality data to meet individualised learning needs.
- collaborative planning, programming, moderation and evaluation between teachers and across year levels, decreasing variability in teacher expertise.
- annual public performances by the students that demonstrates music, drama and instrumental music abilities.
- Continue to promote professional learning for staff aligned to the school's priorities,

- greater participation in Networking opportunities.
- oral language development in the kindergarten through to year 2 (K-2) phase of learning.
- all students access to portable and fixed digital learning tools.

**Our success will be measured through our;**

- average score across all NAPLAN tests within the range of our Network average.
- students to be represented within the top 20% on NAPLAN tested areas.
- the year 3 – 5 cohort's average NAPLAN growth be Above Australian average.
- report grade distribution aligns with like schools.
- pre-primary enrolled students achieving above National Minimum Standard in year 3 NAPLAN for Reading and Maths.
- representative participation in an annual performing arts display or event.



# Relationships

**Maida Vale Primary School strives to build a positive, harmonious relationship between all members of the school community through collaborative, supportive and transparent communication.**

**Through the life of this Business Plan the school will focus upon;**

- reflecting identified behaviours of a 'compassionate school'.
- student well-being across the school.
- a school culture that reflects genuine care and compassion for self and others.
- managing behaviour across the school through an authoritative style that is consistent, supportive and restorative.
- staff creating positive and memorable experience for the students.
- inspiring respect for cultural differences to promote greater acceptance and resilience.
- promoting awareness of First Nations people and their culture within the school and community through teaching and recognition.
- acknowledging culturally and historically significant days and events.
- supporting student attendance through the appointment of a dedicated School Attendance Officer.

**Our successes will be measured through our;**

- student satisfaction in relation to their feelings of inclusion and safety as measured through the National School Survey.
- students in the At Severe Risk category in relation to attendance, is zero.
- support for students who are At Moderate Risk in relation to attendance.
- staff satisfaction in relation to their feelings towards the school as measured through the National School Survey.





# Leadership

**Maida Vale's approach to leadership will be inclusive and consultative. Aspiring leaders at all levels will be provided opportunities to develop and practice leadership in a safe and supportive environment.**

**Through the life of this Business Plan the school will focus upon;**

- greater utilisation of senior teachers as leaders across the school.
- utilising school-based personnel to lead professional learning for staff and community.
- the identification, development and support of aspirant leaders.
- promoting a diverse and engaged School Board consisting of staff and community representatives.
- supporting the identification, development and support of student leaders.
- the use of digital technology in student learning and community communication.

**Our successes will be measured through our;**

- staff satisfaction in relation to their feelings towards the school as measured through the National School Survey.
- increased numbers of staff seeking leadership potential identification.



# Community

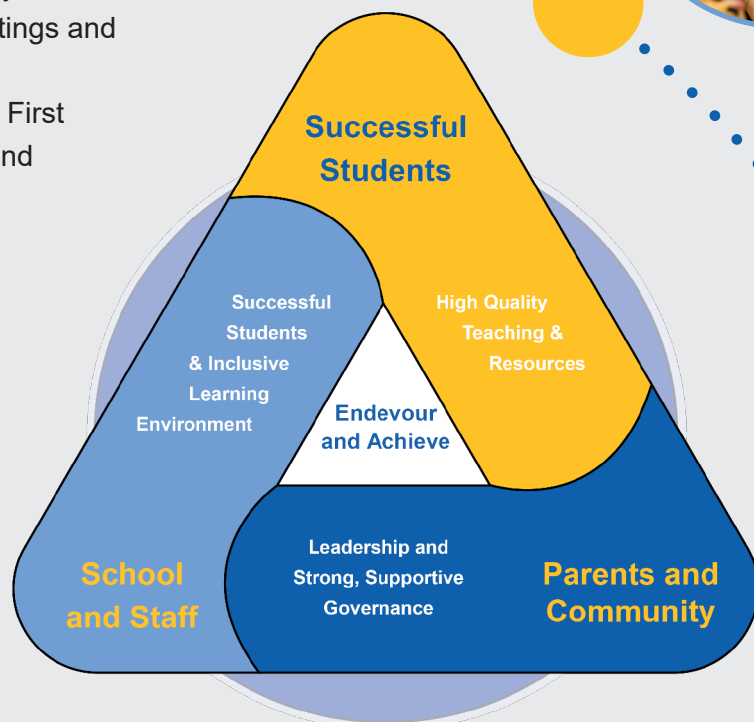
**Maida Vale Primary School through community engagement initiatives will continue to build and maintain an inclusive and supportive environment that will be adaptive, engaging and holistic in its approach to developing independent, successful and community minded learners.**

**Through the life of this Business Plan the school will focus upon;**

- the promotion of greater environmental awareness and sustainable behaviours within the school community.
- staff participation in socialising classroom successes via the Connect communication platform.
- encouraging greater community feedback via P&C meetings, Board meetings and Open Night events.
- encourage the contributions of First Nations people within school and community learning.

**Our successes will be measured through our;**

- community satisfaction in relation to their feelings towards the school as measured through the National School Survey.
- increased returns of regular surveys.
- increased parental attendance at school events.



# Glossary of Terms

## **Aspirant leaders**

Individual seeking higher level leadership responsibilities, at all levels not just into school administration.

## **Authoritative Teacher:**

One that provides firm, clear and realistic boundaries for a child that are enforced in a compassionate way. An authoritative teacher focuses on maintaining high standards and projecting genuine warmth to each child. Disagreements and frustrations are resolved with support and guidance enabling development of self-regulation and improved social competence.

## **Connect**

The communication platform used by Maida Vale Primary and many public schools to communicate with the community.

## **Compassionate school**

A school that provides a safe, supportive and inspirational environment for learning and thriving in order for students to develop.

## **Explicit Instruction**

Method teachers use to teach skills and concepts using a teacher led, highly structured approach. It involves showing students what to do, how to do it and then creating opportunities for them to demonstrate their learning independently.

## **First Nations**

Any of the groups of indigenous peoples of Australia.

## **General Capabilities**

Encompass the knowledge, skills, behaviours and character that will assist students to live and work successfully in the twenty-first century.

## **High Impact Teaching Strategies**

Instructional practices that reliably increase student learning wherever they are applied.

## **Like schools**

Schools that are ranked similar to Maida Vale Primary using the Index of Community Socio-Educational Advantage (ICSEA) scale. It uses key factors that influence educational outcomes of schools e.g.

geographical location, parents' occupation and school education. ICSEA is set at a median of 1000, Maida Vale Primary has an ICSEA of 1028.

## **Moderation**

A process where teachers and schools develop a comprehensive and shared understanding of achievement standards. The process includes teachers collecting samples of student work from a common task and comparing their judgments of the student's work against the achievement standard.

## **NAPLAN**

National Assessment Program — Literacy and Numeracy tests.

## **Network/ Networking**

Refers to the collection of local public schools that Maida Vale Primary is associated with. The Network is referred to as the Bibbulmun Network and includes Kalamunda Primary, Kalamunda Senior High School, Gooseberry Hill Primary, Falls Road Primary, Lesmurdie Senior High School, Pickering Brook Primary, Walliston Primary, Lesmurdie Primary and Roleystone Community College.

## **National Minimum Standard**

The national minimum standards describe some of the skills and understandings students can generally demonstrate at their particular year of schooling, in a specific subject area. It represents the minimum, accepted level of demonstrated skills by students at a testing level.

## **Soft Skills**

Personal attributes that enable someone to interact effectively and harmoniously with other people. These include teamwork, oral communication, initiative, planning and organising.

## **Sustainable**

The ability to continue existing without destroying or degrading that which we need, both now and for the future.

